

Newsletter



Hartstene Pointe Water-Sewer District

(360) 427-2413

772 E Chesapeake Dr.

Shelton, WA 98584

Email: info@hpwatersewer.com

Website: hpwatersewer.com

General Manager:

Jeff Palmer

gm@hpwatersewer.com

Commissioners:

Andrew Hospador

Commissioner1@hpwatersewer.com

Jim Anderson

Commissioner2@hpwatersewer.com

Stacy Swart

Commissioner3@hpwatersewer.com

Pay Your Bill 24/7

Online: hpwatersewer.com

By Phone: 360-427-2413

Billing Office Hours

Mondays: 9:00 am—2:00 pm

Tuesdays: 9:00 am—2:00 pm

Thursdays: 9:00 am—2:00 pm

Board of Commissioners meetings are held on the 1st & 3rd Thursdays of the month at 1:00 pm via teleconference. Visit our website or contact the office for instructions on how to join. All meetings are open to the public.

Hartstene Pointe Water-Sewer District is not associated with or governed by the Hartstene Pointe Maintenance Association. Please direct water-sewer service related questions to the District.

Hartstene Pointe Water-Sewer District is an equal opportunity provider and employer.

WET Science Center & LOTT

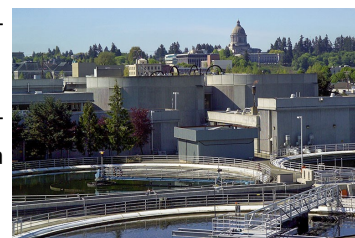


Are you looking for something fun to do this summer? How about visiting LOTT's WET Science Center in Olympia! LOTT (Lacey-Olympia-Tumwater-Thurston County) Clean Water Alliance's WET Science Center is open Monday—Saturday from 10am to 4pm, offers fun, hands-on learning to teach children and adults all about water. LOTT treats wastewater for most of Thurston County and also provides tours of its Wastewater Treatment Plant. Their treatment plant utilizes different

treatment processes than we do, so tours of LOTT would definitely be interesting and informative.

Space is limited, so if you would like to visit the WET Science Center or the LOTT Treatment Facility, read more online or make a phone call to make reservations.

www.lottcleanwater.org (360) 664-2333



AAA Septic Trucks @ WWTP



We get asked a lot of questions about the tanker trucks that haul sludge periodically from the wastewater treatment plant. These trucks are hauling off *sludge* from the facility's *Digester Tank*.

Through the primary and secondary treatment process of treating wastewater, we transform raw sewage into treated wastewater that is very clean by the time it is discharged into Puget Sound. As part of the treatment, biosolids are produced, which is a byproduct of

the treatment process. These biosolids, or sludge, are transferred to a separate tank, called a digester. From there, operators try to separate as much water as possible from the sludge, sending this water back to the primary basins again.

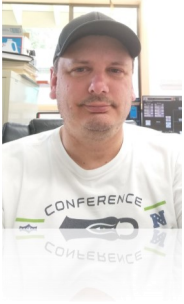
Once the digester is full and water can no longer be separated, AAA Septic (a local company) brings tanker trucks to transport the sludge off-site. The biosolids are transported to the City of Shelton's wastewater facility, where they have treatment processes that can further treat the biosolids from that point.

Please be aware, AAA's trucks are large and it is difficult to maneuver down Chesapeake Drive. Also, anything digester-related can generate potent odors—this is to be expected. AAA hauled off sludge during the last week of June and will likely haul off another batch later this year.

This is all a normal part of the treatment process and it helps keep our wastewater treatment plant healthy and operating properly.

General Manager's Report

We need your help!



I have a couple of requests to ask of the community: one is very important as we head into the summer months, while the other is important, but not urgent at the moment.

The first request is, as we head into summer and warmer weather, to be mindful of your water usage. Please try to follow some of the water saving tips that are in our newsletter each month. Hopefully, we won't have a repeat of the extreme heat we experienced last year, thus making it easier to conserve water.

The second request has to do with Lead & Copper sampling. While we don't have concerns about it being an issue here, we do want to strictly adhere to the sampling guidelines set forth by EPA, which says to collect samples from homes built between 1982 and 1986, or those that have lead service lines. That being the case, we are wanting to guarantee where we collect samples falls into this category. While I do not expect there to be any lead service lines within this community, I know there are some homes built during those years. And the most efficient way for us to find those homes is from you – the homeowner. If you know your home was built in that time period, please let us know. We are required to do this sampling every three years and the next time will be in 2024. So, there is no rush to get this info to us, but we'd prefer to have it before then.

As you can see, both these requests are dependent on the community's cooperation. On behalf of all of us here, I'd like to thank all of you in advance!

—Jeff Palmer, General Manager

CCR Available: hpwatersewer.com/ccr2021.pdf



visit www.nacwa.org/toilets

TOILETS ARE NOT TRASHCANS™

Only Flush the 3 P's: Pee, Poop, & Toilet Paper

A Look Back to 2014...

At HPWSD, commissioners and operators are always looking for ways to make improvements to the quality of treatment of both drinking water and wastewater.

In August 2014, the District completed a major capital improvement project at the wastewater treatment plant.

At most wastewater treatment plants, the first step before *primary treatment* begins is *pre-treatment* or *screening*.

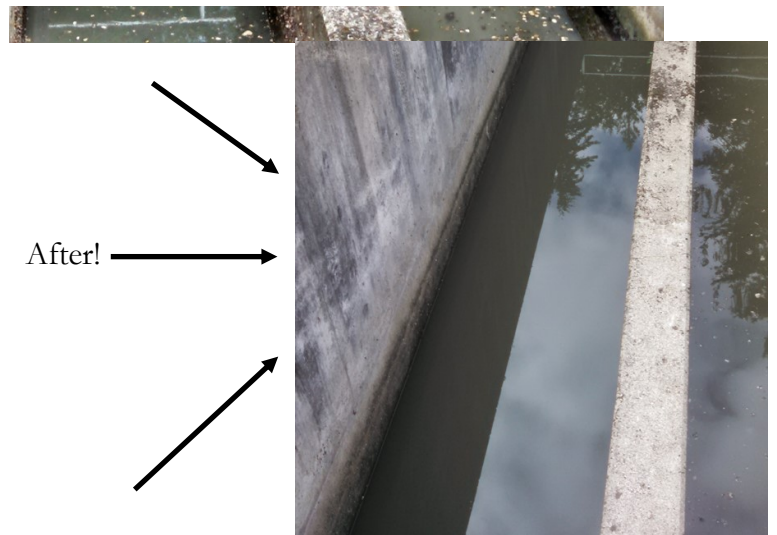
The concept is simple, *bar screens* (think like a colander) or *screen works* (auger-like mechanical devices), remove large debris right where the wastewater enters the plant.

All kinds of debris enter the plant: “flushable” wipes, rocks, food, feminine products...all kinds of things 🙄 that should never be introduced into sewerage. The debris can damage equipment and must be regularly collected by staff by hand and thrown into the trash (an unpleasant task). Please be respectful and dispose of your own trash.

The engineering and installation of the screen works made an enormous difference. See the before and after photos of the contact channels, which speak for themselves:



Before Head Works Installed



After!