

Hartstene Pointe Water-Sewer District

Sewer System Rehabilitation Project

Hartstene Pointe Water - Sewer District



Dedicated to Service

Who We Are



Matt Morkert, PE
Spokane, Washington

Vice President, Operations

A professional headshot of Matt Morkert, a man with a goatee and short hair, wearing a light blue button-down shirt. The photo is set against a light gray background and is framed by a dark blue octagonal shape.

Ron Weigel, PE
Portland, Oregon

Senior Project Manager

A professional headshot of Ron Weigel, an older man with glasses and short hair, wearing a blue patterned button-down shirt. The photo is set against a light gray background and is framed by a dark blue octagonal shape.

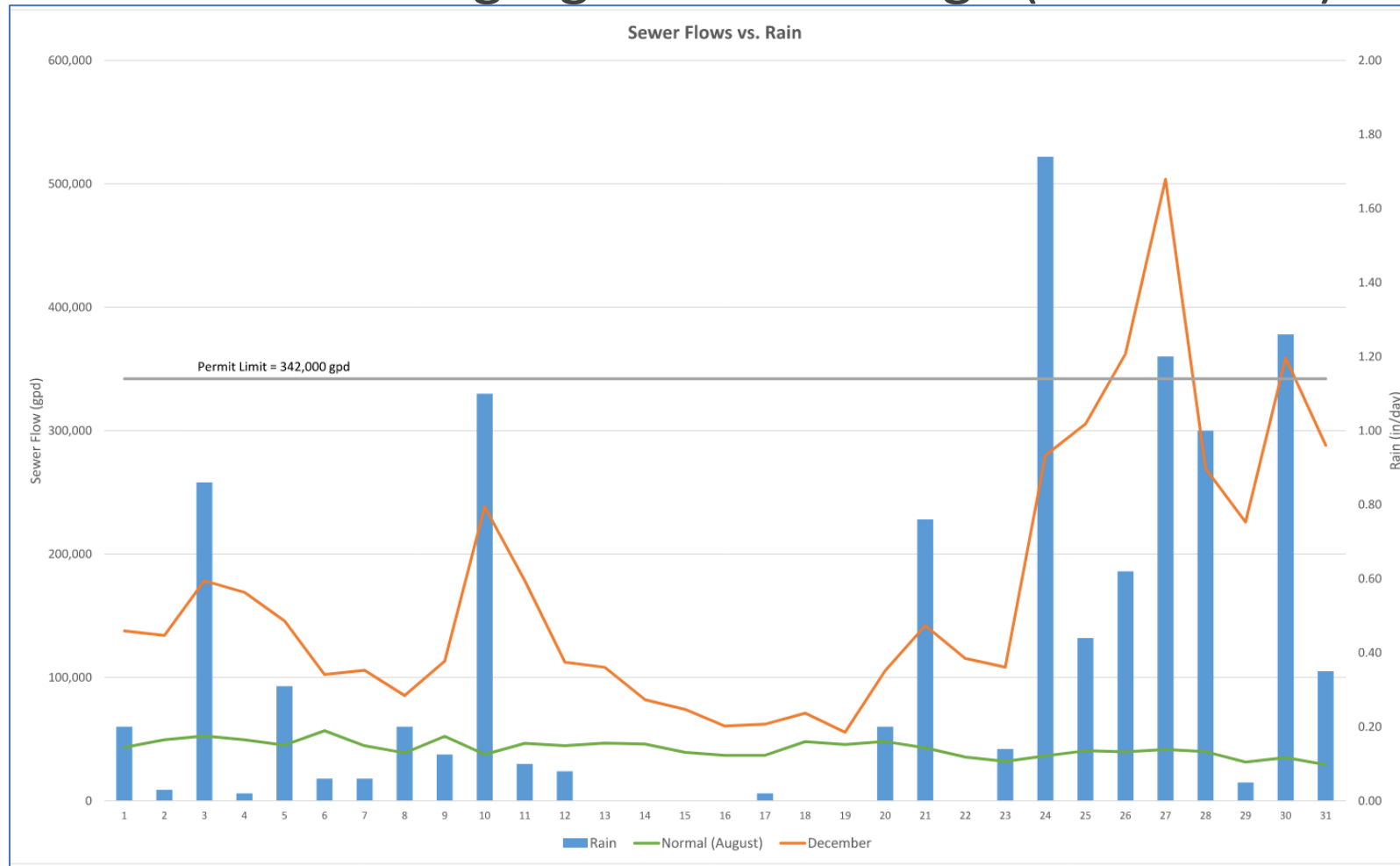
Why Are We Rehabilitating the Sewer?

- Sewer Lines are old and failing
- Sewer Lines weren't properly installed



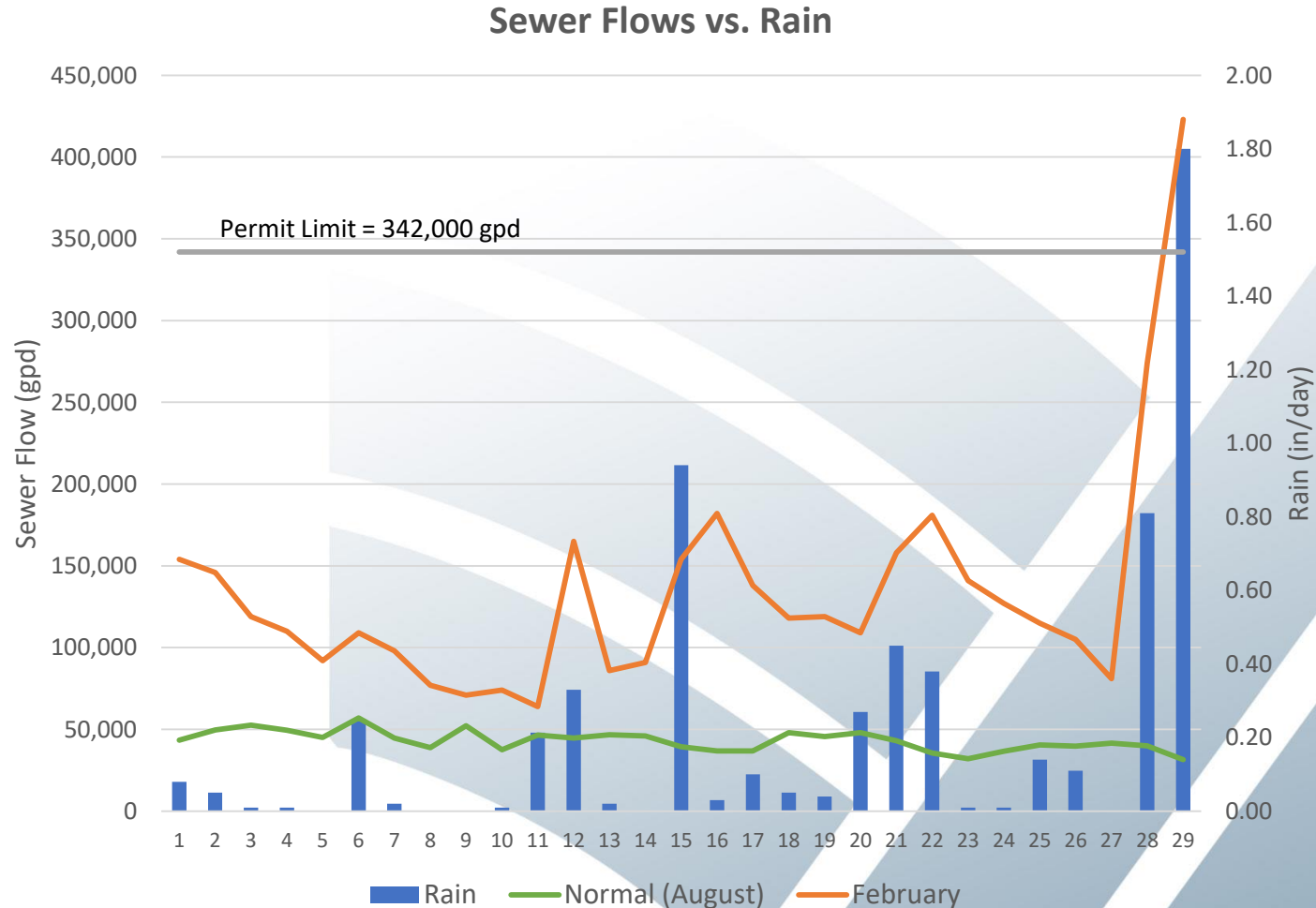
Why Are We Rehabilitating the Sewer?

- Sewer line failures causing significant leakage (infiltration)



Why Are We Rehabilitating the Sewer?

- Sewer line failures causing significant leakage (infiltration)



Why Are We Rehabilitating the Sewer?

- Why is Infiltration (leakage) a concern?
 - NPDES permit limitations

Maximum Month Design Flow (MMDF)	186,000 gpd
Peak Daily Design Flow	342,000 gpd
BOD ₅ Influent Loading for Maximum Month	270 lbs/day
TSS Influent Loading for Maximum Month	270 lbs/day

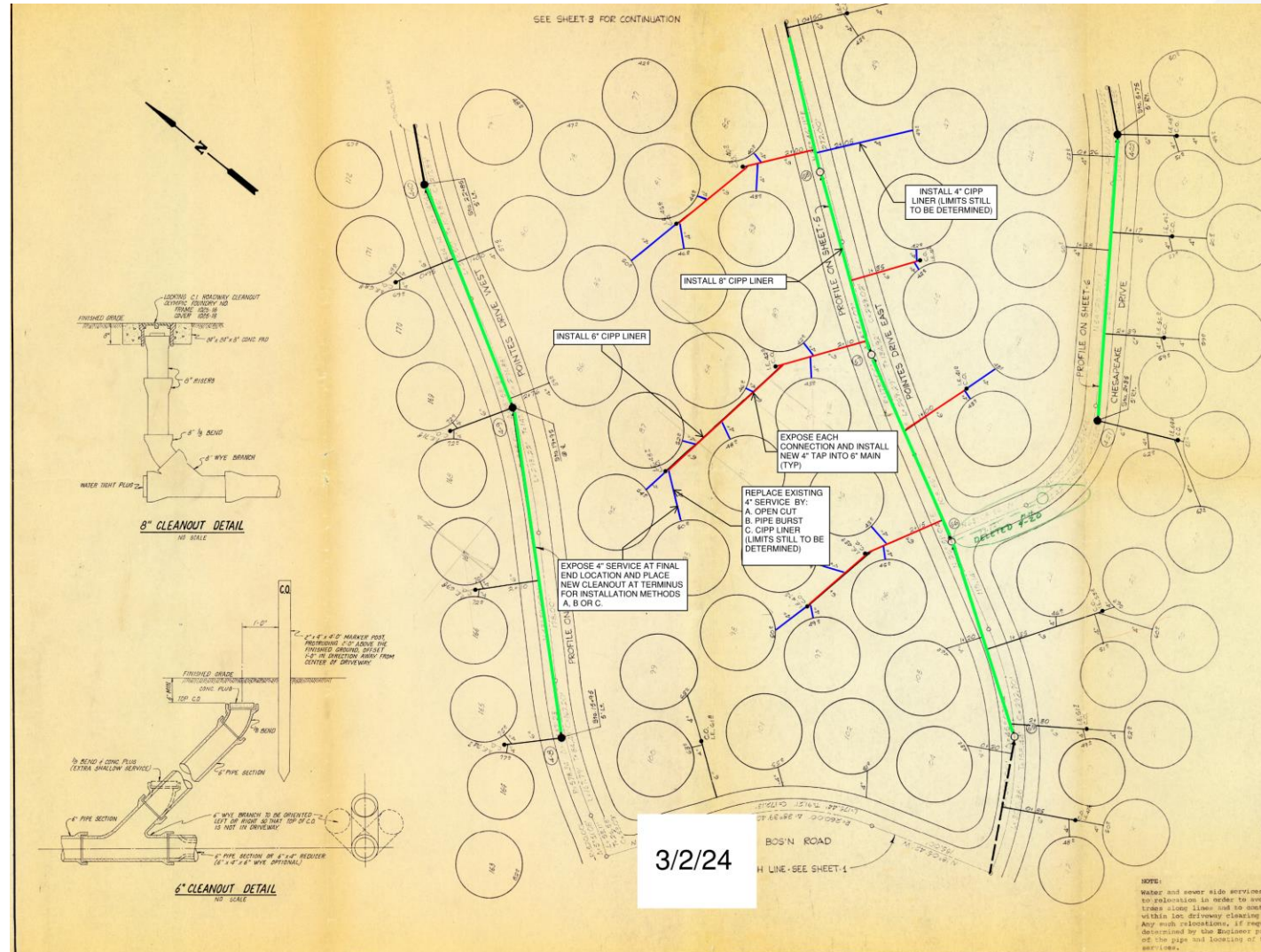
Why Are We Rehabilitating the Sewer?

- Why are violations a concern?
 - Lawsuits due to Clean Water Act (CWA)
 - Waste Action Project filed an intent to sue under CWA in 2023
 - Lawsuits cost money to defend and settle or pay fines
- If not taken seriously, could lead to jail time for Operators and Managers!!!
- Secondary concern – Bluff Sewer
 - Catastrophic failure of bluff would dump raw sewage into Puget Sound

What Are We Going to Do?

- Two components of the project:
 1. Cured in Place Piping (CIPP) for majority of system
 - Potential for Pipe Bursting where CIPP not practical
 2. Bluff Sewer Realignment and Replacement
 - Replace bluff sewer with new pump station and force main in Pointes Drive
- Will also replace or install CIPP in service lines where necessary

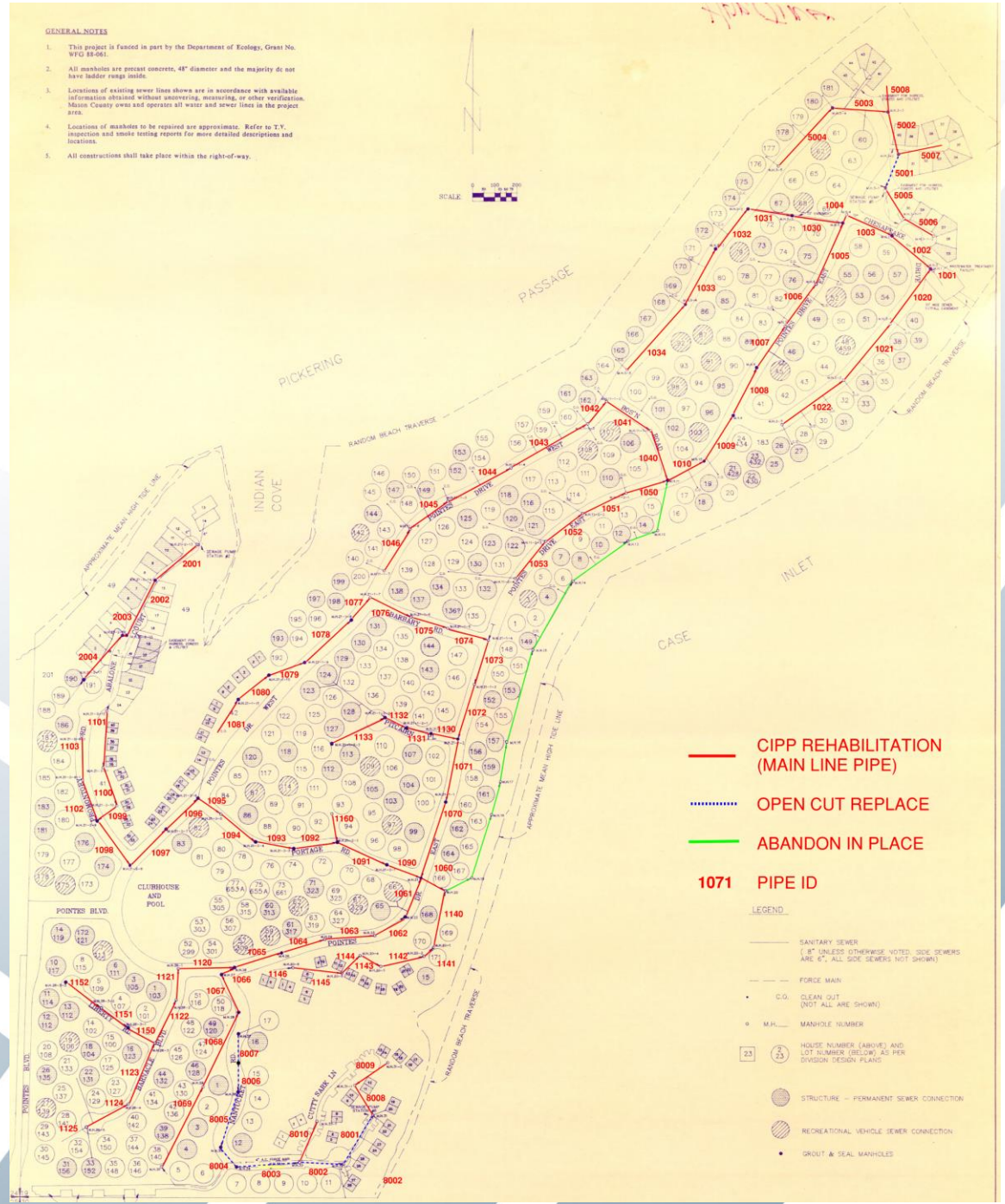
What Are We Going to Do?



What Are We Going to Do?

GENERAL NOTES

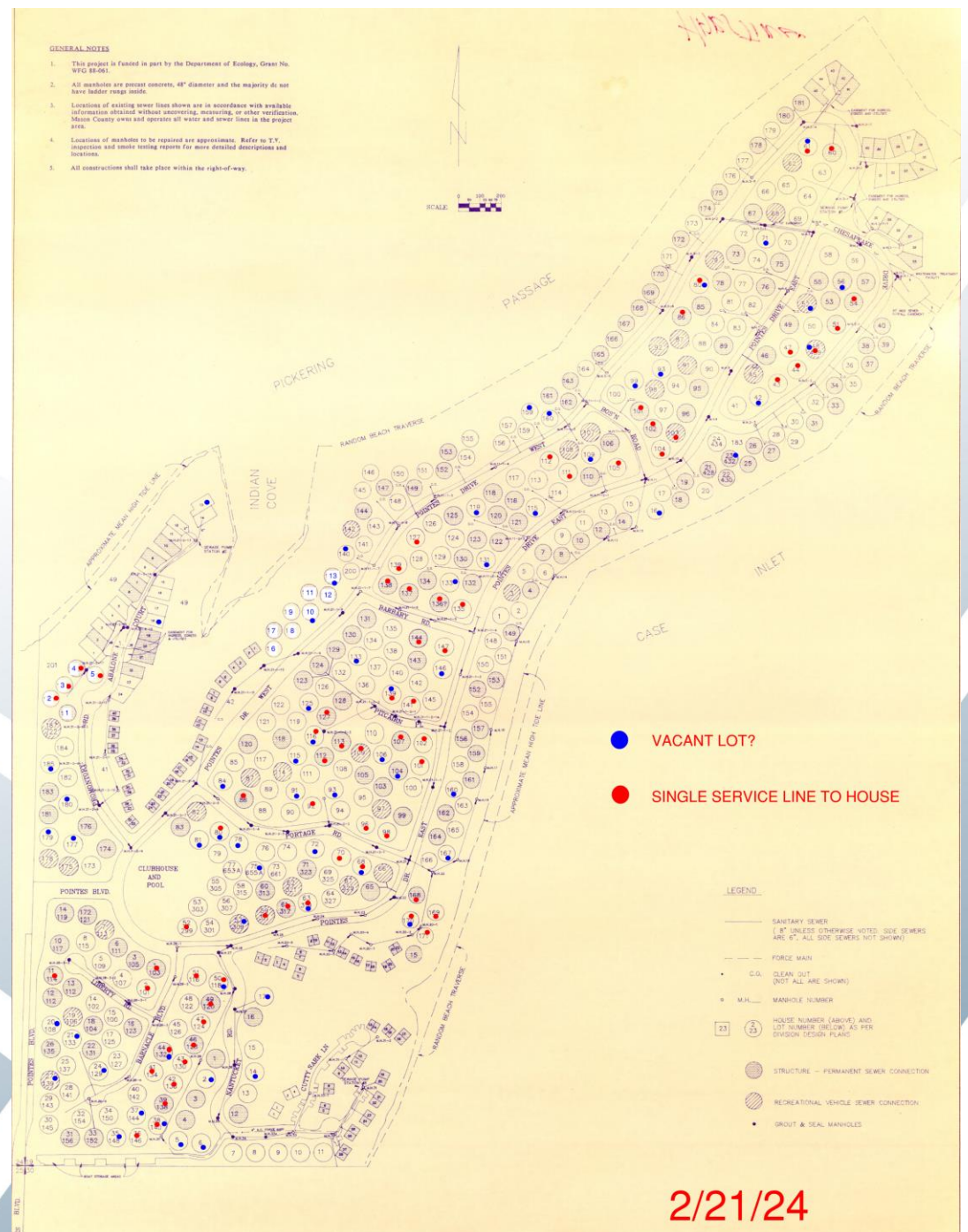
1. This project is funded in part by the Department of Ecology, Grant No. WFO 88-061.
2. All manholes are precast concrete, 48" diameter and the majority do not have ladder rungs inside.
3. Locations of existing sewer lines shown are in accordance with available information obtained without uncovering, measuring, or other verification. Mason County owns and operates all water and sewer lines in the project area.
4. Locations of manholes to be repaired are approximate. Refer to T.V. inspection and smoke testing reports for more detailed descriptions and locations.
5. All constructions shall take place within the right-of-way.



What Are We Going to Do?

GENERAL NOTES

1. This project is funded in part by the Department of Ecology, Grant No. WFG 88-061.
2. All manholes are precast concrete, 48" diameter and the majority do not have ladder trap inside.
3. Locations of existing sewer lines shown are in accordance with available information obtained without uncovering, measuring, or other verification. Mason County owns and operates all water and sewer lines in the project area.
4. Locations of manholes to be repaired are approximate. Refer to T.V. inspection and smoke testing reports for more detailed descriptions and locations.
5. All constructions shall take place within the right-of-way.



How is this Going to Impact Me?

- CIPP and Pipe Bursting Portion
 - Minimal trenching and digging
 - Typically crew is setup at adjacent manholes
 - Streets should be nearly fully open, maybe partial closures at manholes where they are in the middle of the street
 - Minimal road replacement, only where necessary

How is this Going to Impact Me?

- Bluff Sewer Line
 - Will need to install a trenched in force main from Portage to Bos'n
 - Most impact along this stretch
 - Will try to keep it on one side of the road to allow traffic to pass
 - Road replacement anticipated to be as minimal as possible, half-road width at the most

Mailers Coming Soon

March XX, 2024

Re: Hartstene Point Water Sewer District Sewer Project

Dear Property Owner/Resident:

This letter is sent on behalf of the Hartstene Pointe Water/Sewer District. The purpose of the letter is to seek your input before finalizing the design of the sanitary sewer that will service your property. We have attached a map and photo of your property showing the proposed location for your sewer stub connection. If you would like the sewer stub connection located elsewhere along your property, please indicate your desired change on the attached map in the following manner:

1. With a colored pencil or marker, cross out the proposed stub location with an "X".
2. Mark your new location on the map.
3. If you already know where the sewer service line leaves your house, please mark it on the attached map
4. Return the marked-up map to Century West Engineering, 11707 E. Montgomery Drive, Spokane Valley, WA 99206.

If you have a question about the stub location or about the sewer project, please contact Matt Morkert at (509) 838-3810.

At this time, we anticipate construction will begin this summer. As part of the construction process, you will probably see wooden construction stakes placed in or near your yard. These stakes are to control the location of asphalt paving and are set back several feet from the edge to protect them from the construction equipment. The stakes will be removed after construction is complete.

Typically, the sewer service stubs are installed to the property line, or several feet beyond the property line, to facilitate your connection. This means that the trench for your service stub will extend a short distance into your property. Please contact Matt Morkert at (509) 838-3810 if this presents a problem for you. The contractor will replace sod areas that are disturbed on your property as a result of the project construction activities.

If you have any improvements (e.g., sprinklers, electrical cable, shrubs, flowers, fencing, modular walls, railroad ties) in the right-of-way that you want to keep, you need to move them as soon as possible or they might be damaged or removed as part of the construction. The District is not responsible for any damage to any improvements you may have within the right-of-way.

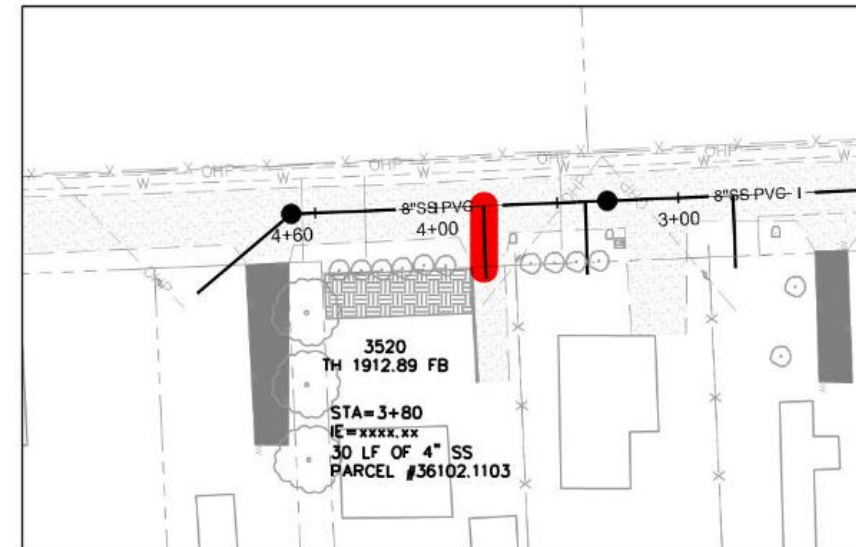
Sincerely,

CENTURY WEST ENGINEERING CORPORATION

Matt Morkert, P.E.
Project Manager

Enclosure

3520 HASTINGS



Schedule

	2023	2024				2025				2026
	Q4	Q1	Q2	Q3	Q4	Q1	Q2	Q3	Q4	Q1
Notice to Proceed	★									
Field Investigations & Reporting	■									
Permitting	■	■								
Preliminary Design	■	■								
Final Design		■	■	■						
Construction					■	■	■	■	■	
Public Involvement		★	★	★						



Questions?